

# PINCRAFT Industries LLP

*Beauty Care Implements*

---

# PRODUCT CATALOG

[www.Pincraft.in](http://www.Pincraft.in)



# ABOUT US

Established in 1998, Pincraft manufactures and exports the finest quality Beauty Care Implements — Tweezers, Cuticle Nippers, Pushers & Cutters, Black Head Removers, Gua sha tools and allied products for the cosmetic industry.

Pincraft creates value-added, high-quality products and undertakes OEM Manufacturing for Brands, Private Label Manufacturing for Retailers, and supplies to spas and salons in bulk quantities.

Clients span European countries (Italy, Spain, France, Sweden), the Middle East, USA, and Australia. Pincraft continually seeks to expand its geographic reach and partner with brands and retailers in new markets.

As a design expert, Pincraft innovates with new ranges, seasonal collections, and partners with brands on new designs and packaging options.



# TWEEZERS COLLECTIONS

---



## Solitaire Collection

The Solitaire "Swarovski" Collection features authentic crystals sourced from Austria, laid out in beautiful designs on the tweezers body. Pincraft offers a range of customizable designs and a variety of crystals to choose from.



## Elegante Collection

A beauty tools collection with a premium matt finish on the entire surface. The matt look is completely smudge-free and provides a durable, sophisticated look. The complete range of 36 pieces is available in Matt finish.



## Bella Collection

Bella tweezers feature beautiful patterns etched into the body. Introduced with 8 designs inspired by the world around us, these tweezers also come in premium custom-made designs.

# SOLITAIRE COLLECTION

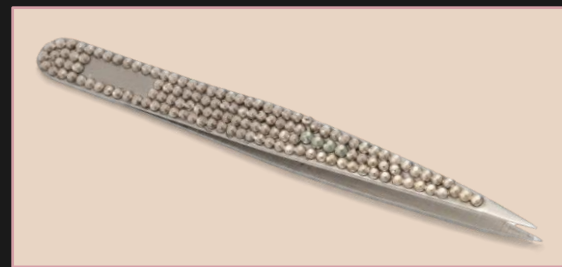
*Authentic Swarovski Crystals · Customizable Designs · Multiple Colourways*



Full Body – Colour Crystals



Full Body – Clear Crystals



Full Body – Black Diamond



Floral – Black Diamond



Floral – Colour Crystals



Floral – Clear Crystals

*Available in 16 Swarovski crystal shades including Crystal, Black Diamond, Emerald, Indian Pink, Rose Peach & more*

# ELEGANTE COLLECTION

*Premium Matt Finish · smudge-Free · 36-Piece Range*

The elegant matt finish provides a premium and sophisticated look to the beauty tools. The finely powdered matt effect grants a truly professional finish. Matt effect can be made available across our complete set of 36 pieces and available in custom colors.

## FINISH

Premium finely powdered matt

## BENEFIT

Completely smudge-free

## PIECES AVAILABLE

Full range of 36

## AVAILABLE FOR

All tweezers' series



# BELLA COLLECTION



Honeycomb



Petals



Polka



Square



Dash



Diamond



Stars



Floral



*Etched Patterns · 8 Signature Designs · Bespoke Options Available*

# PRODUCT FEATURES

---

## Professional Grade 304 Stainless Steel

Premium surgical-quality steel for durability and precision

## Excellent Grip

Corrosion-resistant with anti-magnetic properties

## Beautiful Collections

Solitaire, Bella & Elegante premium finish options

## Finishes Available

Steel, Coloured Glossy, Coloured Matt & Matt

## Perfectly Aligned

Hand-crafted and perfectly aligned tips for flawless results

## Dimensional Accuracy

Consistent dimensional accuracy across every piece

## Complete Range of Tips

Slant, Straight, Pointed, Round, Hook & more

## For Professional & Home Use

Suitable for spas, salons, grooming kits & DIY kits

# OTHER TWEEZERS TYPES - Elegant series

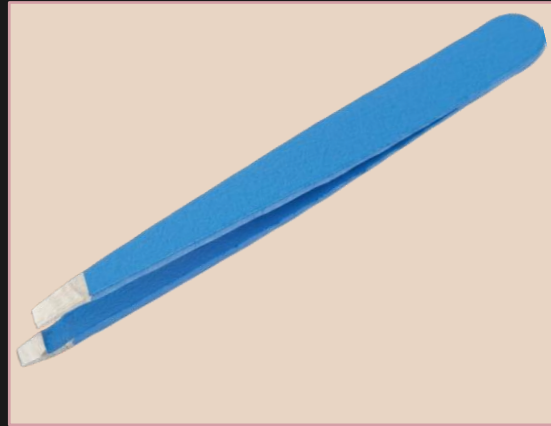


**Elegant 97mm**

Classic multipurpose tweezers in a petite body structure. Easy to handle, store and maintain.



TIPS: Slant · Straight · Pointed · Round · Slant & Pointed

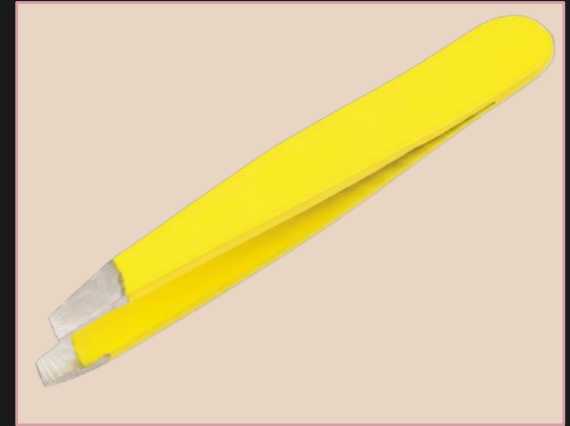


**Elegant 80mm**

Designed for travel and ideal for eyebrow or make-up kits. A compact and precise option.



TIPS: Slant · Straight · Pointed · Round



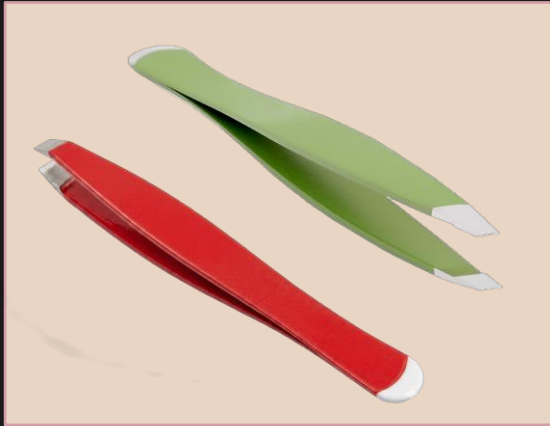
**Elegant 65mm**

Mini tweezers ideal for travellers and people on the go. Swift action for eyebrow plucking.



TIPS: Slant · Straight · Round

# OTHER TWEEZERS TYPES- Fish, Wide body & Ellipse

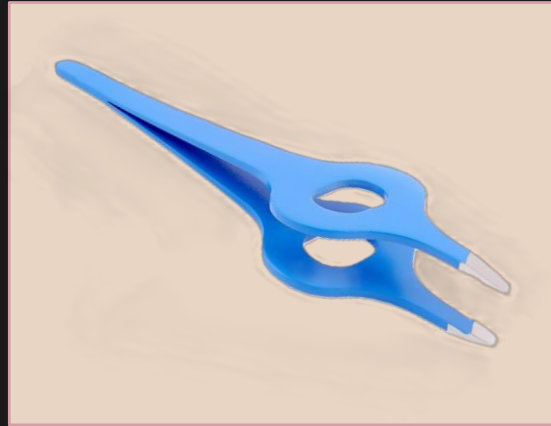


## Fish & Fish pusher series

Streamlined body shaped like a fish for better grip. Available with optional cuticle pusher on the rear end.



TIPS: *Slant · Straight · Hook*



## Wide body

Unique wide body design with thumb hole for firmer grip and superior control during hair removal.



TIPS: *Slant · Straight*



## Ellipse

Different body shape offering the same precision and finesse. A sleek and functional alternative.



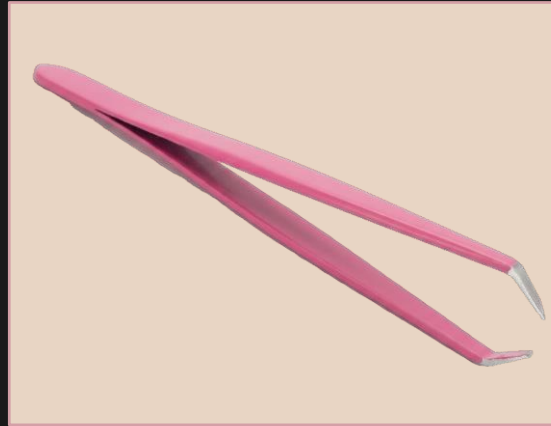
TIPS: *Slant · Straight · Pointed · Round*

# OTHER TWEEZERS TYPES-Hook series



## Hook

Classic multipurpose tweezers in a petite body structure. Easy to handle, store and maintain.



## Hook mini

Designed for travel and ideal for eyebrow or make-up kits. A compact and precise option.



## Hook with pusher

Different body shape offering the same precision and finesse. A sleek and functional alternative.

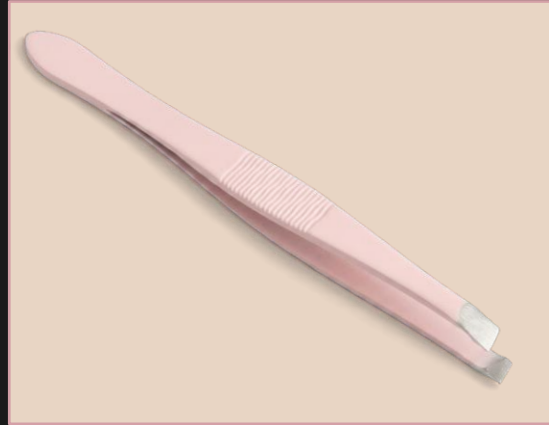
# OTHER TWEEZERS TYPES-Petit series



## Step Knurling with step

Step knurling comes with gradient lines on the tweezers. These gradients prevent any slippage and provide a strong and steady grip to the tweezers.

The knurling effect comes with a step before the gradient.



## Step Knurling without step

Same Knurling effect without the steps before the gradient.

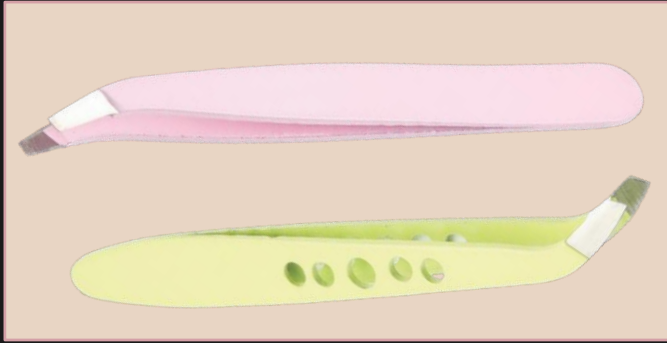


## Small Fish

The mini variant in the shape of a fish is a handy tool when travelling.

The fish shape provides a beautiful design to Small fish tweezers.

# OTHER TWEEZERS TYPES - Angular, Splinter & Body H series



## Angular & Angular with holes

A professional favorite for superior grip and control. Also available with 5 finger-placement holes.

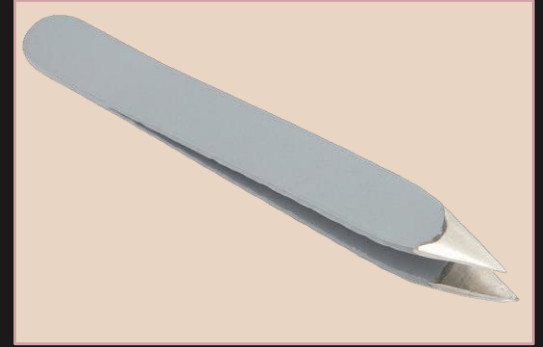
Tips: available : Slant · Straight



## Splinter

Splinter tweezers have elongated points for removal of ingrown hair, splinters, or any other foreign object with minimal damage to skin.

Tips: Slant · Straight · Pointed



## Body H

The pointed tip of Body H tweezers make them perfect for removing ingrown or fine hair from any part of the body, avoiding any slippage or hair breakage.

# TWEEZERS TIP TYPES

---



**Slant**

The most popular all-purpose tip. Angled edge ideal for everyday eyebrow grooming.



**Straight**

Flat-edge tip for precision hair removal and technical grooming tasks.



**Pointed**

Sharp, fine point for removing ingrown hairs and splinters with accuracy.



**Round**

Blunt, safe tip ideal for sensitive areas and beginners.



**Slant & Pointed**

Dual-purpose angled tip with a pointed end for versatile use.



**Hook**

Claw-shaped tip for applying and removing lash and brow extensions.

# BLACK HEAD REMOVERS

Our range of black head removers help in removing blackheads , unwanted oil and dirt from clogged pores.

These tools are available in round and twisted tips to take care of every kind of clogging requirement.

The body types come in 3 shapes:  
Round, Hexagonal and Square



# BLACK HEAD REMOVER- Types



## Round Surface

Smooth round body with ergonomic grip.



## Round with Knurling

Textured knurling for anti-slip hold.



## Round without Knurling

Clean round handle, smooth finish.



## Square Twisted

Square body with twisted tip detail.



## BHR Hex with Single Pin

Hexagonal body with precision pin tip.

# CUTICLE NIPPERS & PUSHERS

## Cuticle Nippers

These tools provide a swift cuticle cutting action. Available in 3 tip sizes to suit different fingers. Can be made available in a variety of colour finishes and steel finish.

### 3mm Tip

For smaller, delicate cuticle areas

### 5mm Tip

Standard size for most fingers

### 7mm Tip

Wider cut for heavier cuticle growth



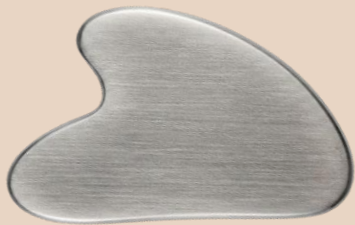
## Cuticle Pushers & Cutters

Pushes back unwanted cuticle growth. Available in 120mm and 130mm lengths with knurling for firm grip and prevents slippage.



# GUA SHA TOOLS

Pincraft's Gua Sha collection applies our signature precision craftsmanship to the ancient art of facial & body sculpting. Crafted from premium 304 stainless steel- engineered for professional-grade results, perfectly weighted, flawlessly finished & built to last.



## Heart Shape

*For the Face*

Contoured heart design mirrors the natural curves of the face. Ideal for lifting and sculpting the cheeks, jawline, forehead and décolletage. The dual-edge profile allows for both broad strokes and precise work.



## Long Shape

*For the Body*

An elongated ergonomic blade designed for broader muscle groups and body contouring. Ideal for the neck, shoulders, back, arms and legs. The extended reach reduces hand fatigue during longer sessions.



## Comb Shape

*For the Scalp*

Multi-tine comb profile stimulates circulation across the scalp to promote hair health and relieve tension. Structured teeth penetrate through hair to reach the scalp with ease — suitable for all hair types.

# QUALITY & FINISHES

## **304 Stainless Steel**

Premium alloy — hard, durable & hygienic

## **Corrosion Resistant**

Safe with oils, serums & water

## **Hand Finished**

Smooth, skin-safe edges on every piece

## **Perfectly Weighted**

Ergonomic balance for fatigue-free use

## **Professional Grade**

For salons, spas & home use

## AVAILABLE FINISHES



### **Original Steel Finish**

The natural brushed stainless-steel finish delivers a clean, professional aesthetic. Cool to the touch — a timeless choice for professional settings and retail.



### **Gold Finish**

A warm gold or classic gold PVD coating elevates the visual appeal — a luxurious gift or statement piece in any beauty collection or retail display.

## Custom packaging

- ✓ Retail box packaging
- ✓ Brand printing and embossing in custom finish (matt/gloss)
- ✓ Premium tin packaging
- ✓ Blister or heat-seal options
- ✓ Gua sha combo sets with essential oils

Sculpt. Glow. Repeat



# PIN CRAFT Industries LLP

*Beauty Care Implements*

---

[www.Pincraft.in](http://www.Pincraft.in)

## MARKETING & PRODUCTION OFFICE

Pincraft Industries LLP  
340, Export Promotion Industrial Park  
Kundli – 131028, Distt. Sonapat, Haryana, India

Email : [Info@pincraft.in](mailto:Info@pincraft.in)

*Contact us for samples and product information*